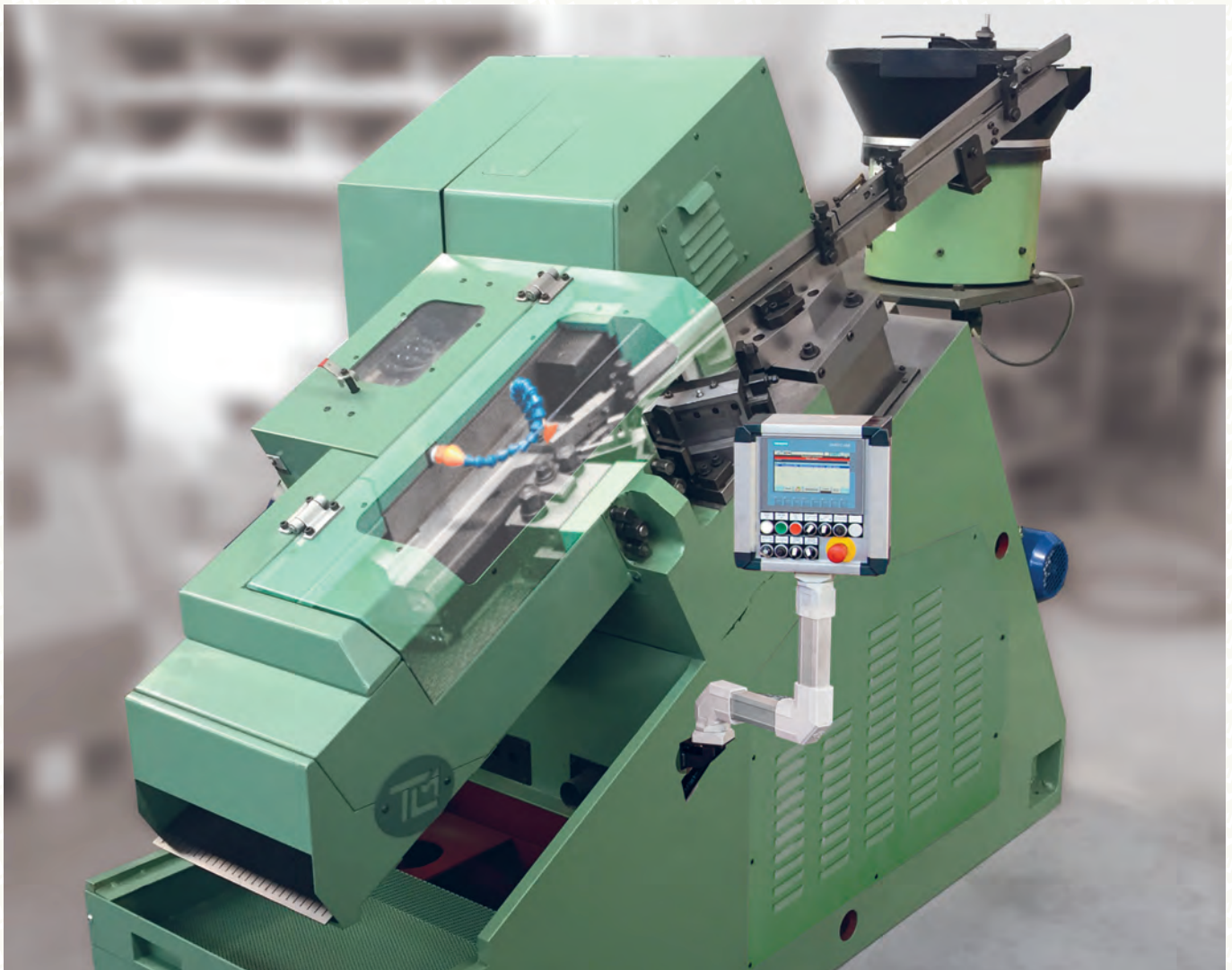




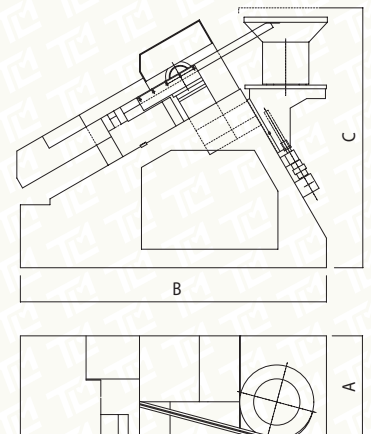
Flat dies machines for screws and special threads

RP4



Automatic thread rolling machine complete with vibro-feeder, for the execution of threads from M2 to M4 with high precision and productivity:

- production capacity up to 700 pieces per minute
- guide support with vertical adjustment, which allows to leave the die block tool-holder always in the same position, and simply get the “phase” if the flat dies are done correctly
- Siemens touch screen operator panel with self-diagnostic management by the latest generation Siemens PLC
- certifiable Industry 4.0
- suitable for the production of small parts
- areas of use: electronics, jewelry, cycle and motorcycle, white goods industry.



Technical features: approximate values. The machine speed can change according to the material used and the type of item to be rolled. Measures in mm.

Output pieces per min.	Machine screws diameter	Self-tapping screws diameter	Wood-screws diameter	Thread length	Thread length for pointed screws	Under head shank length for partial thread	Standard flat die size	Total power	Weight	Machine size
min 250 max 750	min 1,7 max 4	min 2,2 max 3,5	min 2 max 3,5	min 5 max 30	25	54	58x66x20 H 32	HP 7,5	Kg 1500	A 550 B 1650 C 1400